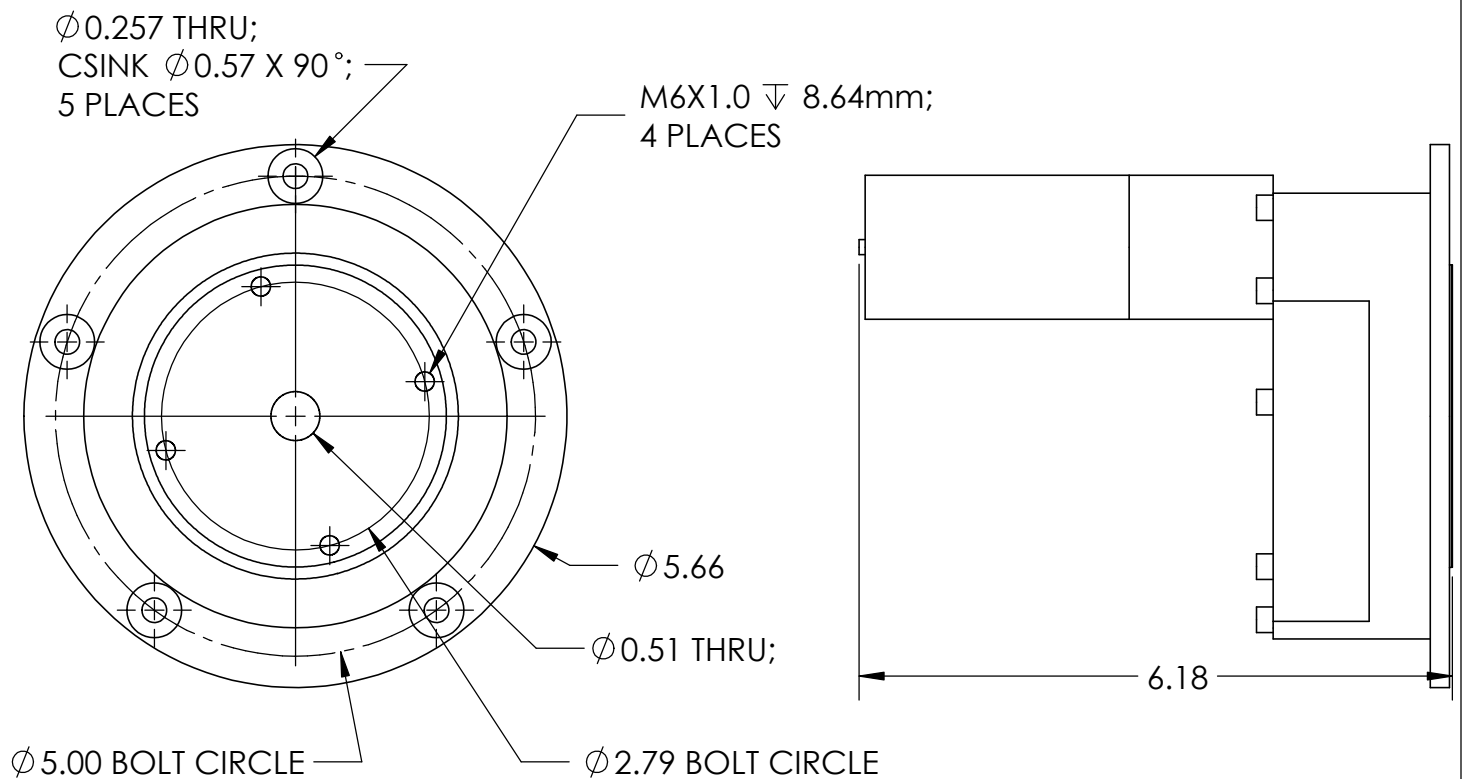
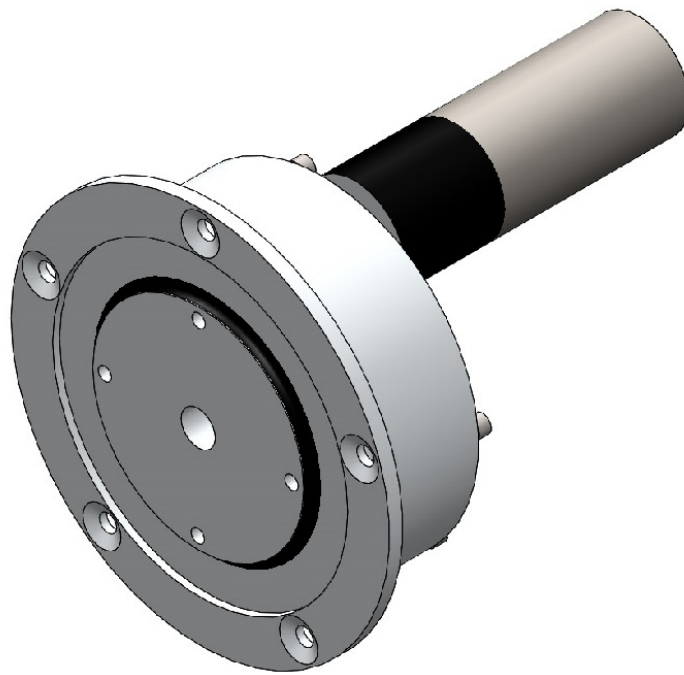


EML2322L

**MOTOR
INFORMATION**

(REVISED 8/26/18)

4.5 RPM Double Reduction Globe Motor

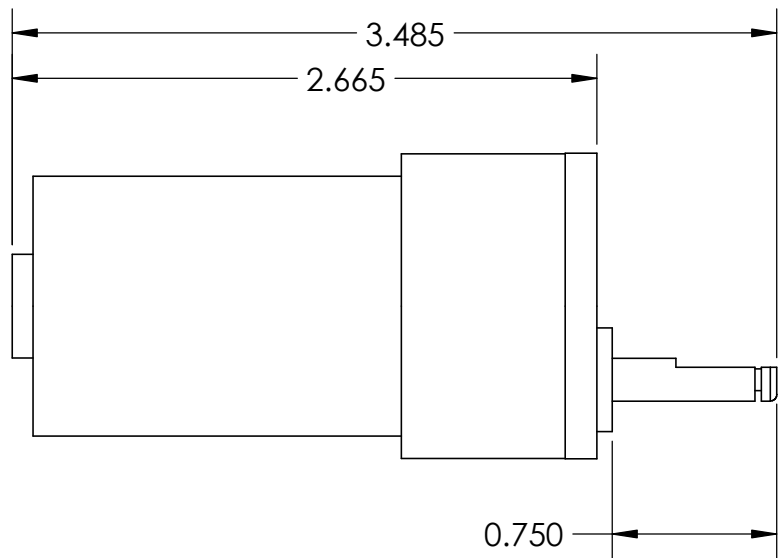
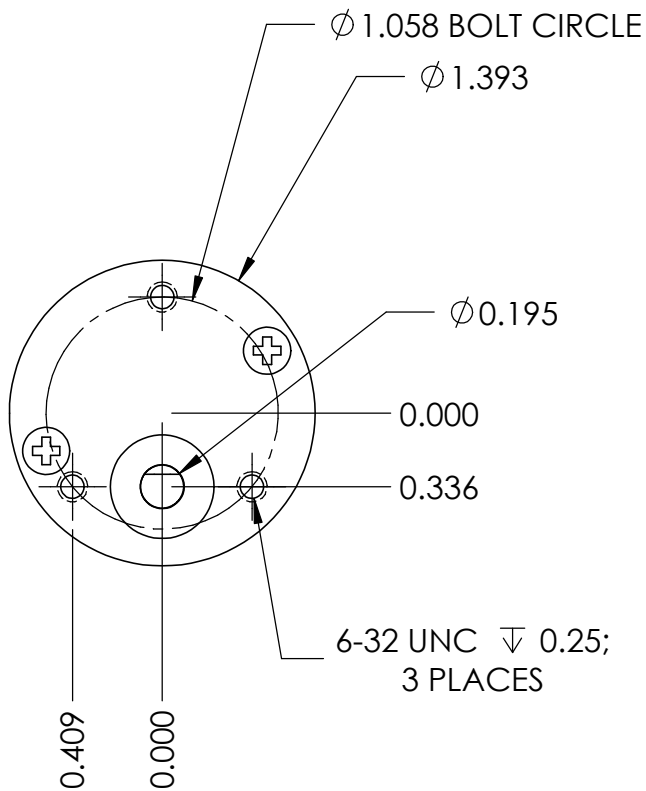
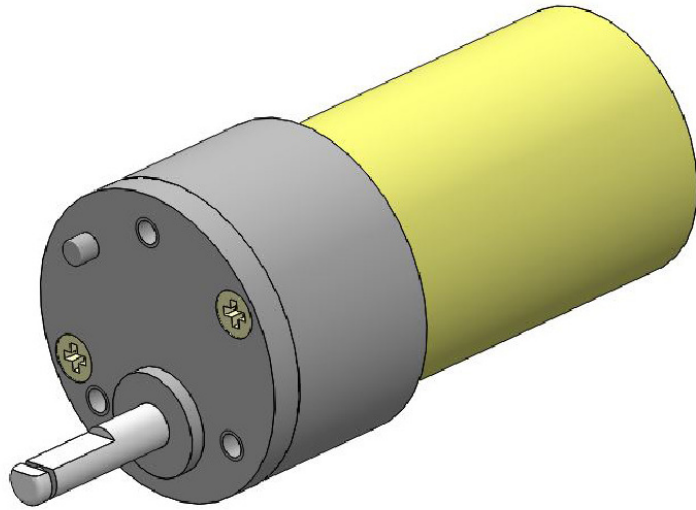


Specifications:

Voltage: 12 VDC
Current: 130mA (no load)
Speed: 4.5 RPM (no load)
Torque: 125 in-lb
Back-drive Torque: 125 in-lb
Reversible
Weight: 4.5 lb

DIMS IN INCHES

9 RPM Buehler Gear Motor (Long Shaft - Imperial)

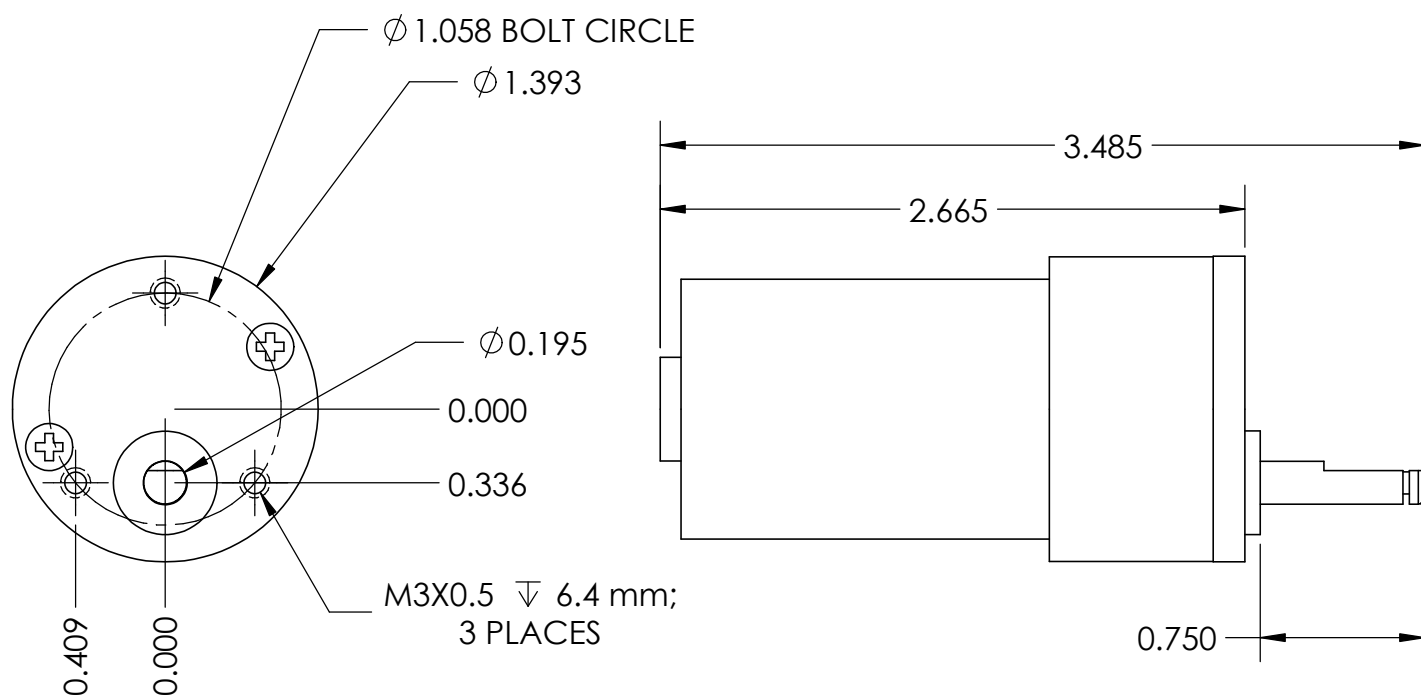
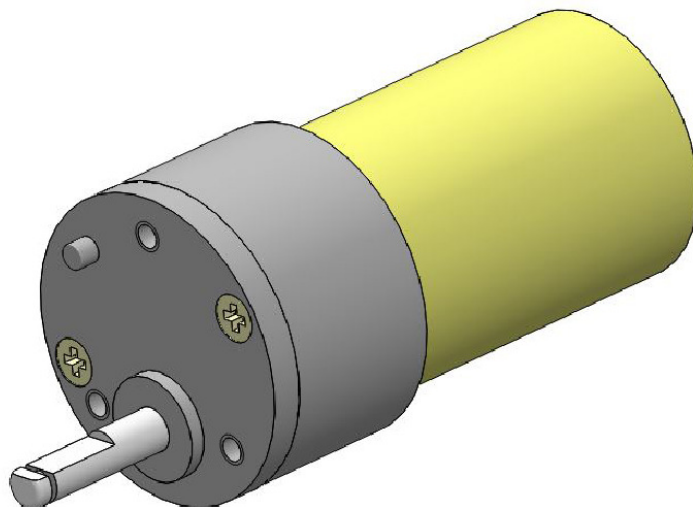


Specifications:

Voltage: 12 VDC
Current: 20mA (no load)
Speed: 9 RPM (no load)
Torque: 120 in-oz
Back-drive Torque: 30 in-oz (estimated)
Reversible
Weight: 0.6 lb

DIMS IN INCHES

9 RPM Buehler Gear Motor (Long Shaft - Metric)

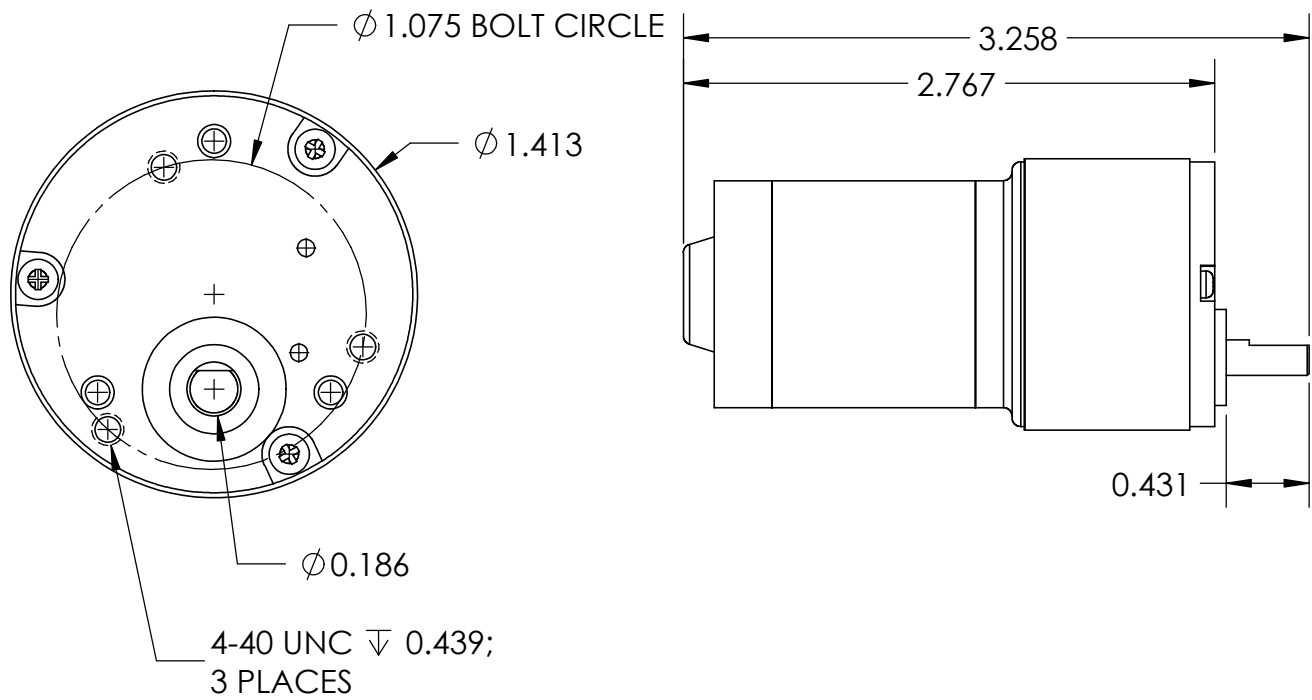
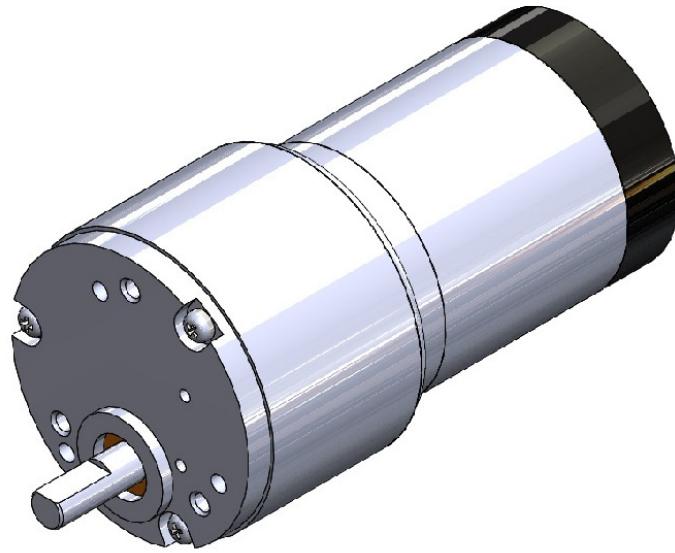


Specifications:

Voltage: 12 VDC
Current: 20mA (no load)
Speed: 9 RPM (no load)
Torque: 120 in-oz
Back-drive Torque: 30 in-oz (estimated)
Reversible
Weight: 0.6 lb

DIMS IN INCHES

11 RPM TRW Gearmotor

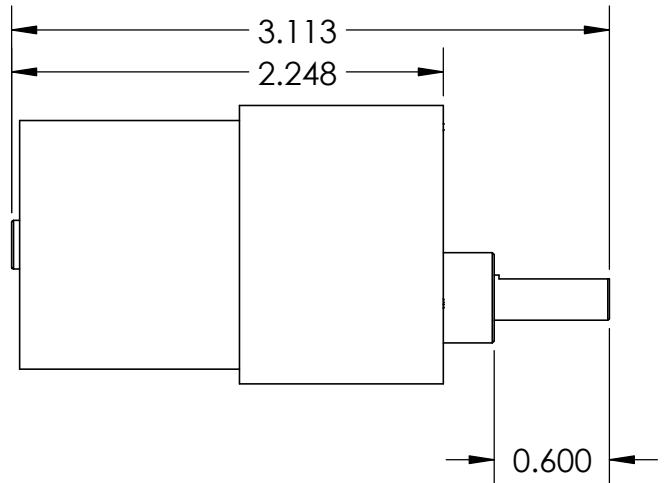
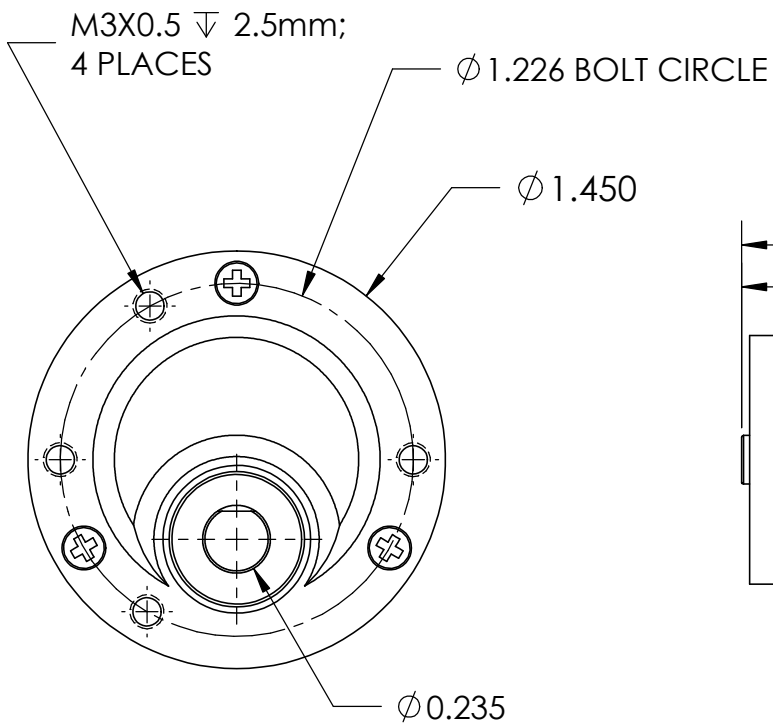
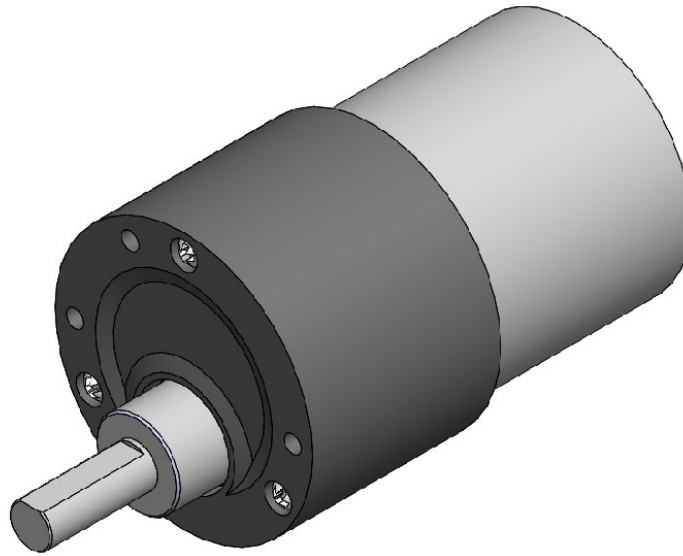


Specifications:

Voltage: 12 VDC
Current: 0.4 A (no load)
Speed: 11 RPM (no load)
Torque: 60 in-oz
Back-drive Torque: 30 in-oz (estimated)
Reversible
Weight: 0.4 lb

DIMS IN INCHES

15 RPM SEI Gearmotor



Specifications:

Voltage: 12 VDC

Current: 60mA (no load)

Speed: 15 RPM (no load)

Torque: 17.5 in-lbs

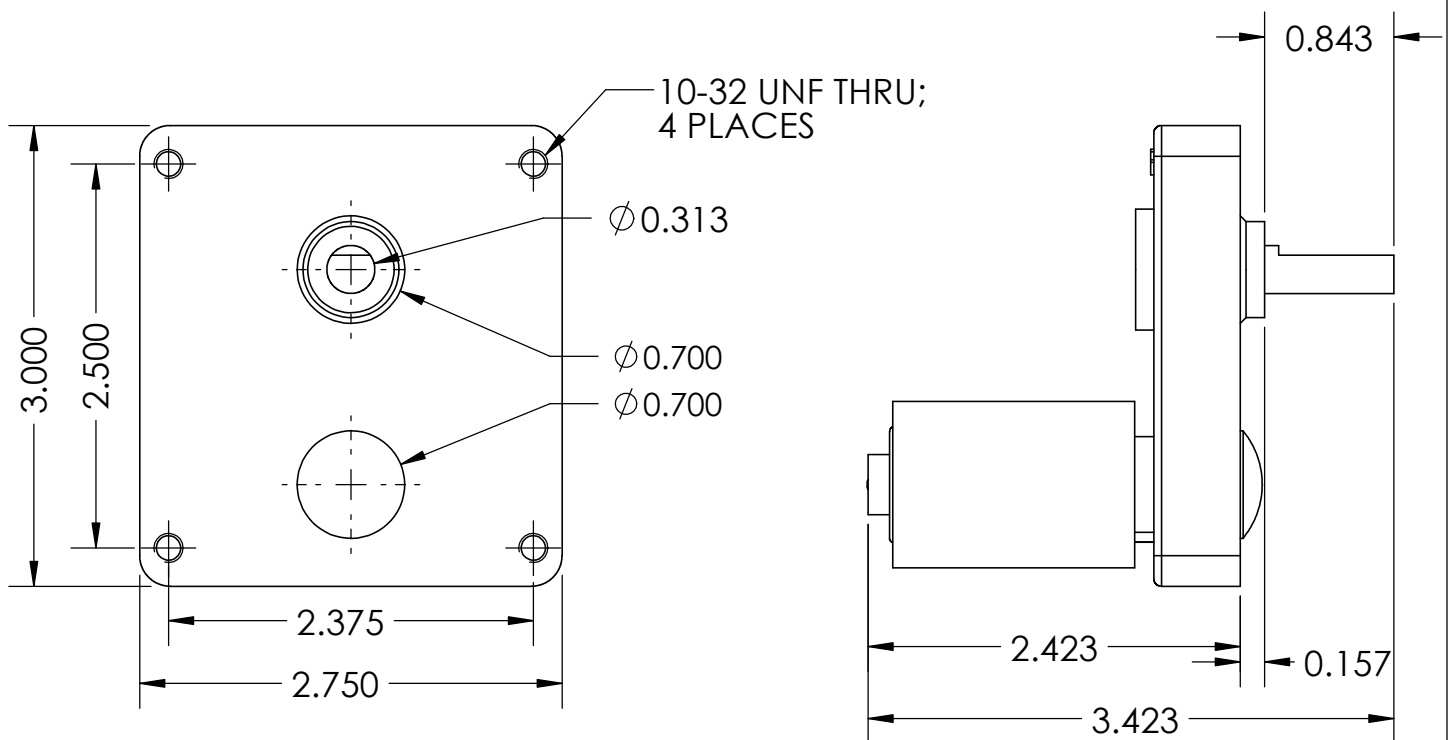
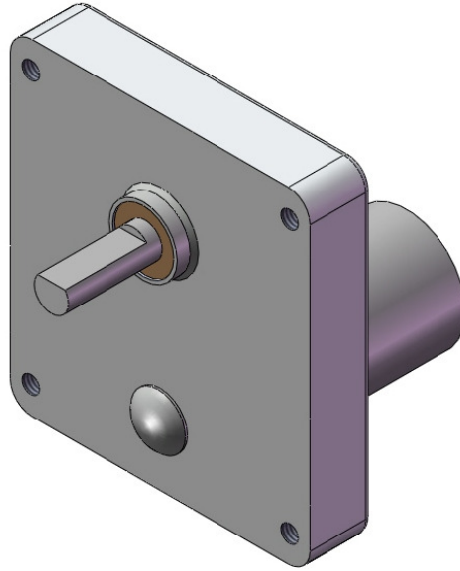
Back-drive Torque: 30 in-oz (estimated)

Reversible

Weight: 0.4 lb

DIMS IN INCHES

17.5 RPM Molon Motor



Specifications:

Voltage: 12 VDC

Current: 175mA (no load) / 0.6A (full load, i.e. stall)

Speed: 17.5 RPM (no load)

Torque: 7.5 in-lb

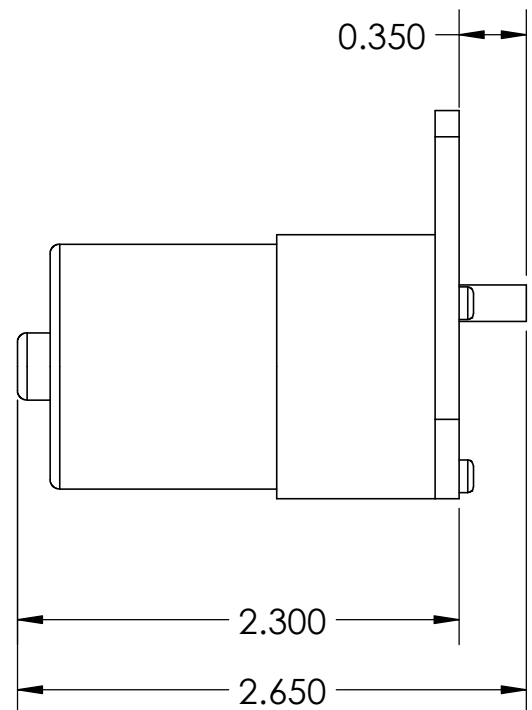
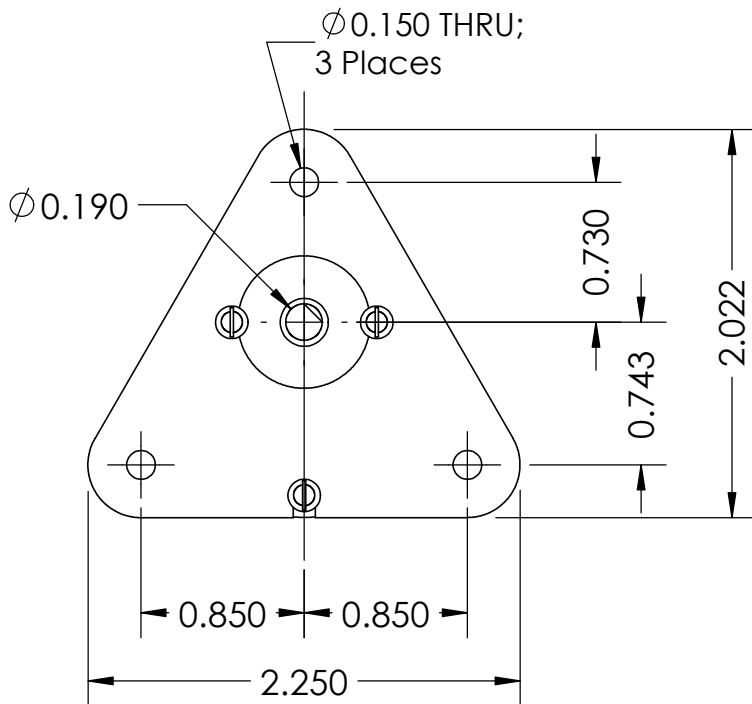
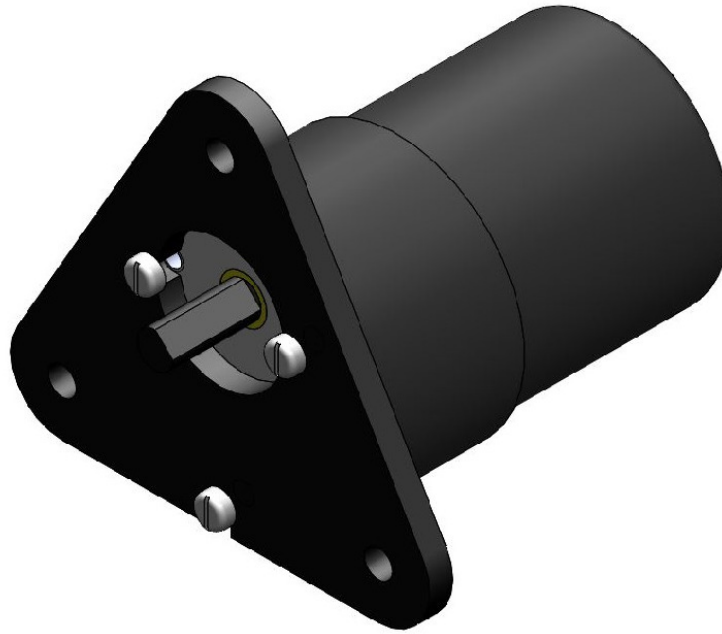
Back-drive Torque: 3.8 in-lb

Reversible

Weight: 0.8 lb

DIMS IN INCHES

25 RPM Barber-Colman/Xerox Gearmotor



Specifications:

Voltage: 12 VDC

Speed: 25 RPM (no load)

Torque: 21 in-oz

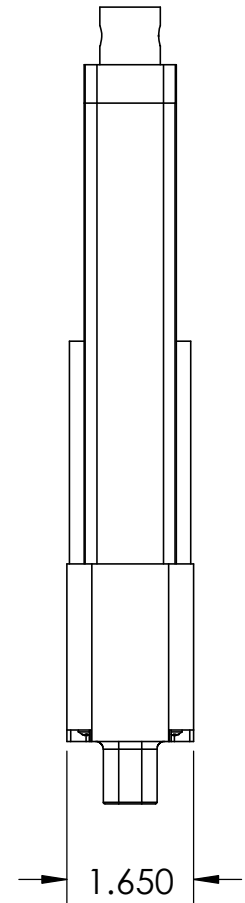
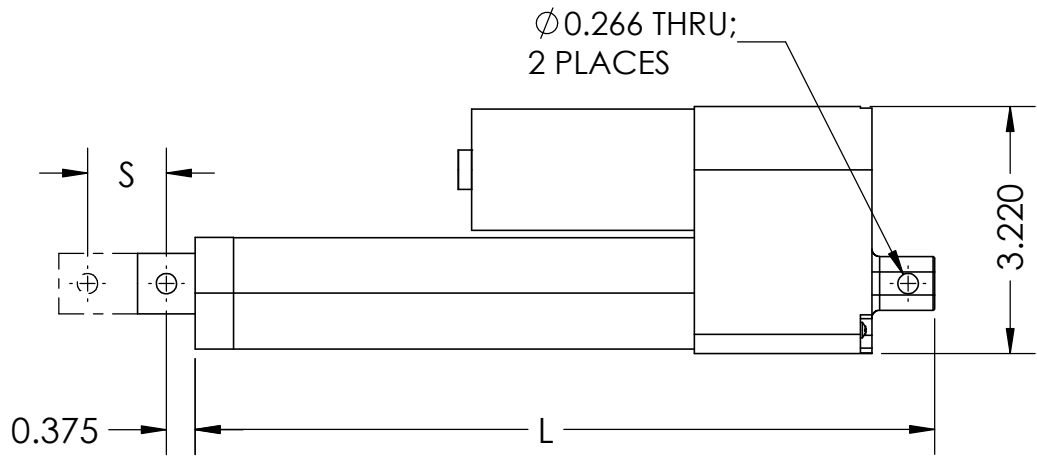
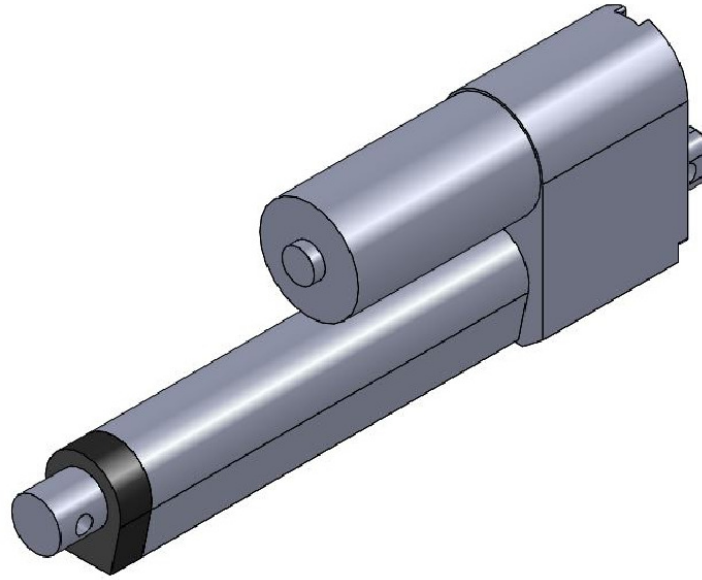
Back-drive Torque: 30 in-oz (estimated)

Reversible

Weight: 0.4 lb

DIMS IN INCHES

30 IPM Spal Linear Actuator



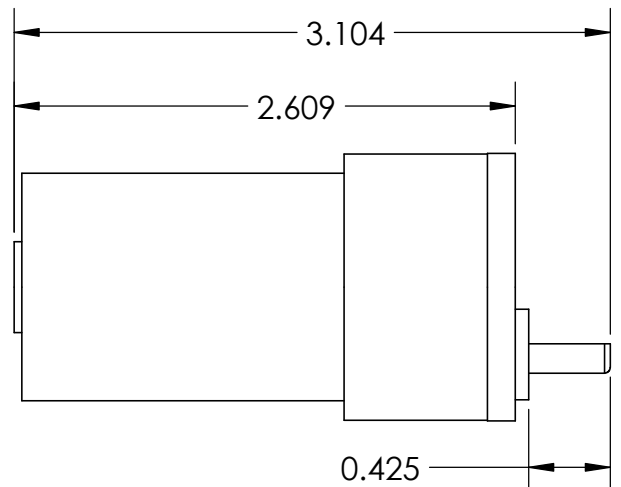
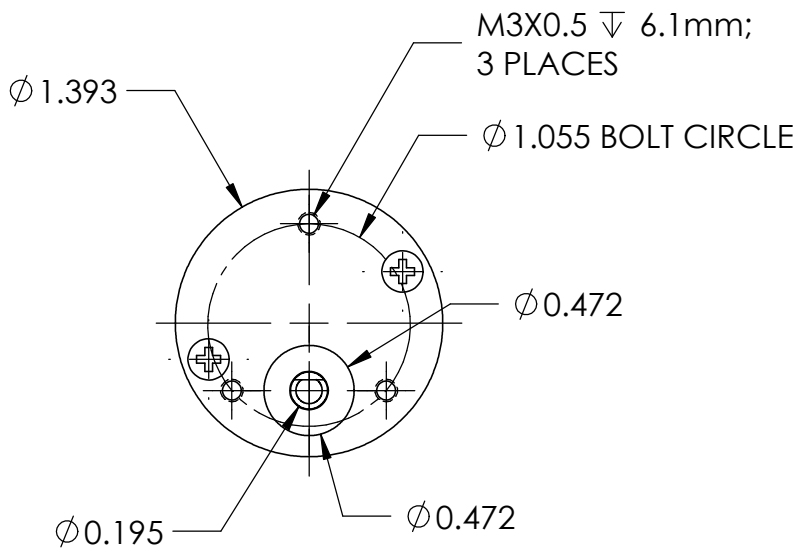
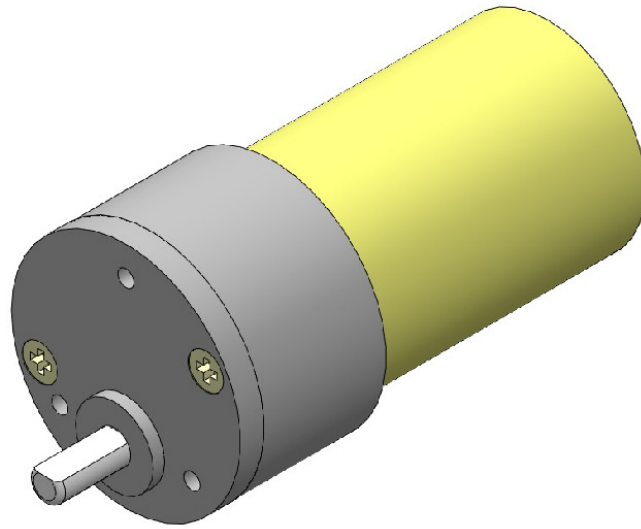
Specifications:

Voltage: 12 VDC
 Speed: 0.5"/second (no load)
 Dynamic Load: 110 lb
 Static Load: 500 lb
 Stroke (S): refer to table

DIMS IN INCHES

Model	Length (L)	Stroke (S)	Weight (lb)
2"	7.61"	2"	2.4
4"	9.61"	4"	2.5
6"	11.61"	6"	2.7
8"	13.61"	8"	2.8
10"	15.61"	10"	3.0
12"	17.61"	12"	3.1

36 RPM Buehler Gear Motor (Short Shaft)

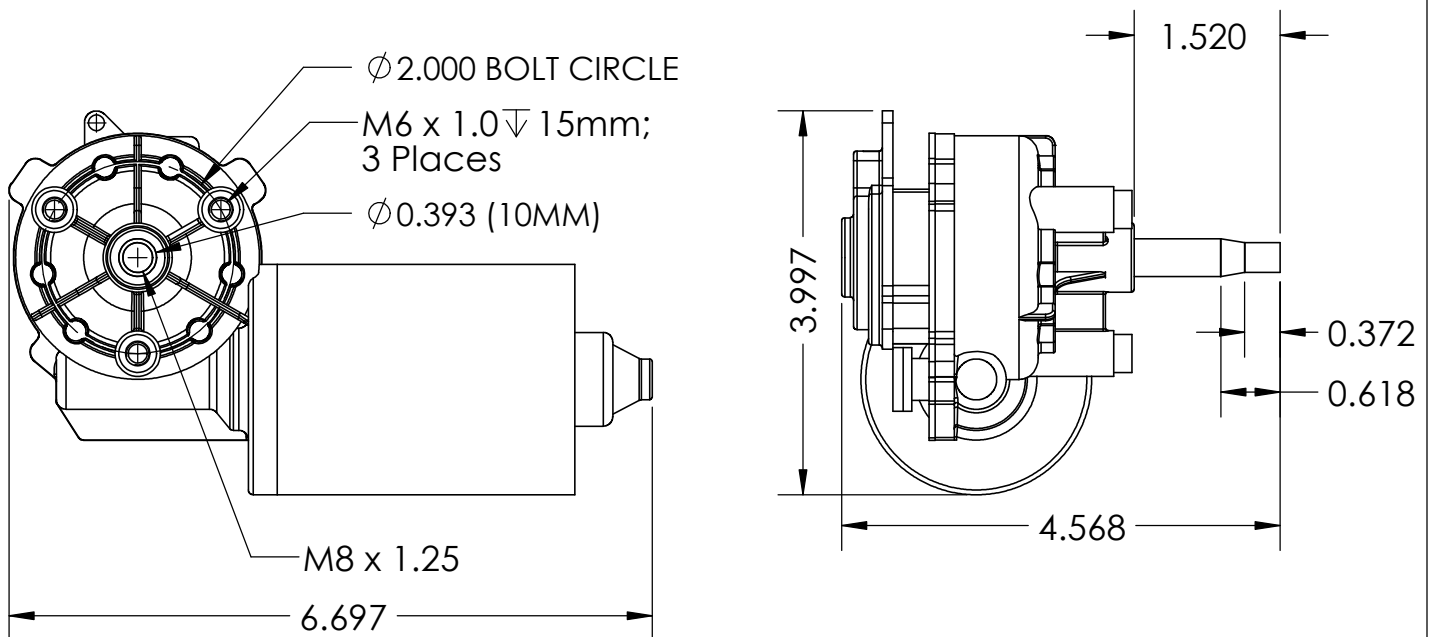
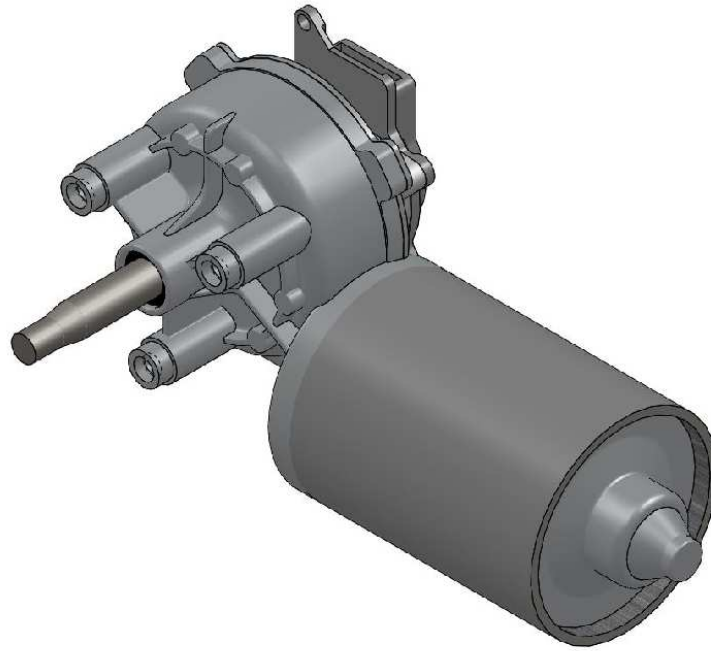


Specifications:

Voltage: 12 VDC
Current: 20mA (no load)
Speed: 36 RPM (no load)
Torque: 100 in-oz
Back-drive Torque: 30 in-oz (estimated)
Reversible
Weight: 0.6 lb

DIMS IN INCHES

44 RPM Entstort Right Angle Drive Gearmotor

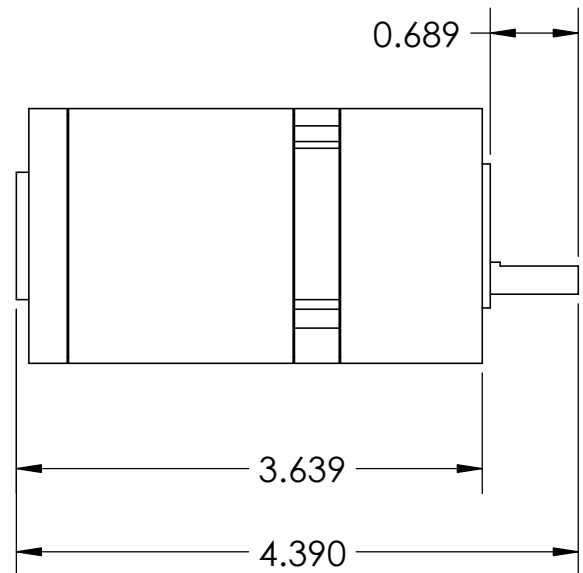
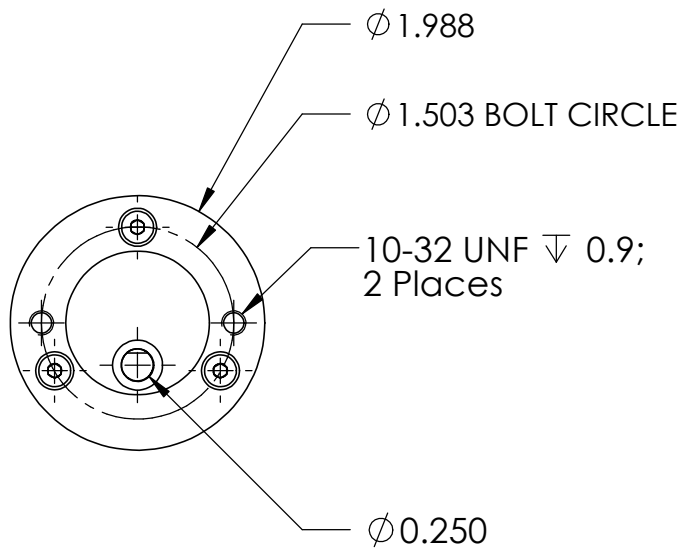
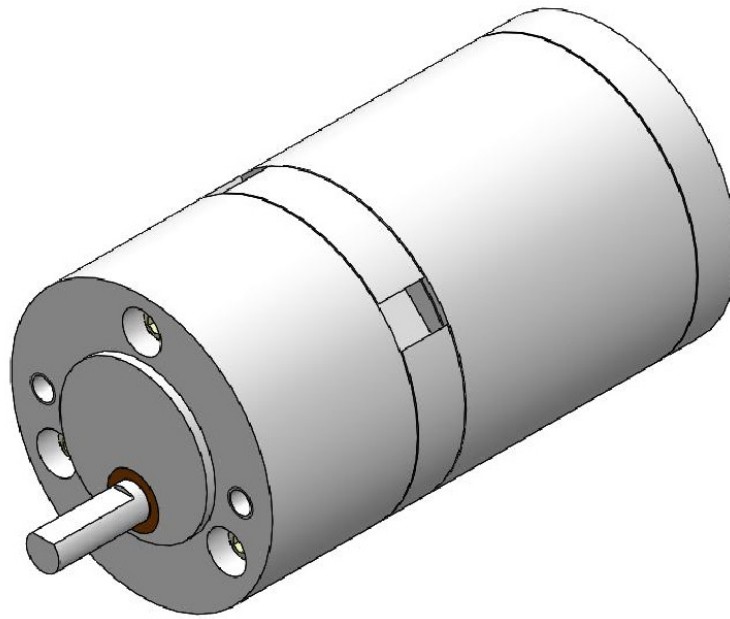


Specifications:

Voltage: 12 VDC
Current: 1.5A (no load) / 12A (full load, i.e. stall)
Speed: 44 RPM (no load)
Torque: 120 in-lb
Back-drive Torque: 72 in-lb
Reversible
Weight: 2.5 lb

DIMS IN INCHES

50.5 RPM Colman Motor

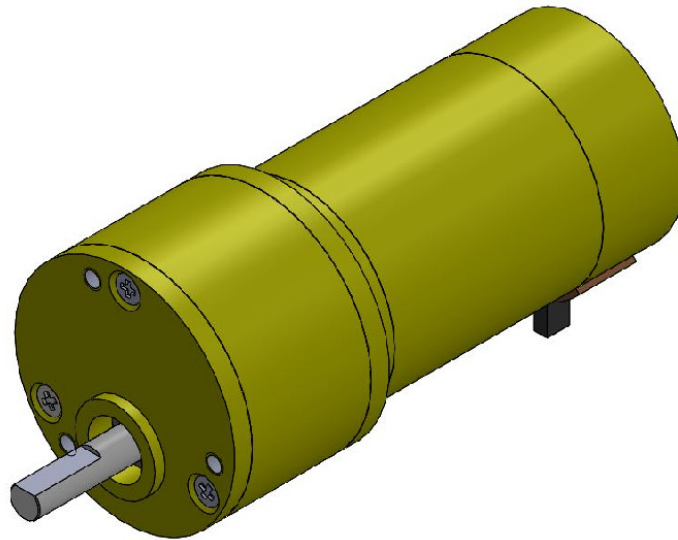


Specifications:

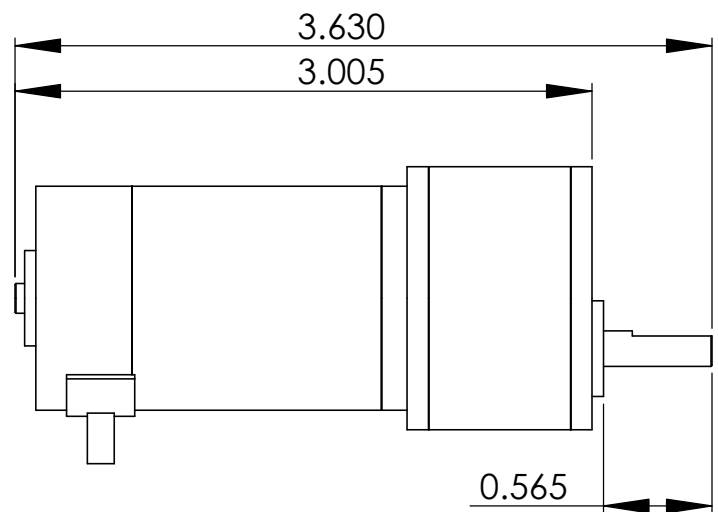
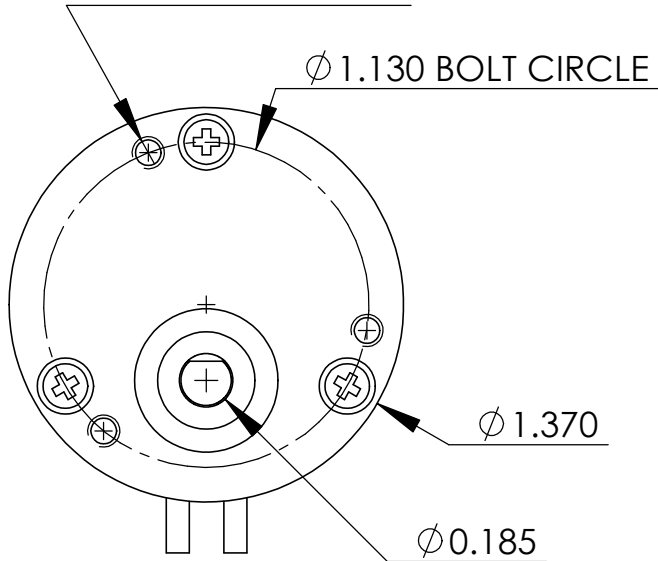
Voltage: 12 VDC
Current: 0.6A (no load)
Speed: 50.5 RPM (no load)
Torque: 92 in-oz
Back-drive Torque: 30 in-oz (estimated)
Reversible
Weight: 1.4 lb

DIMS IN INCHES

51 RPM Pitmann Gearmotor



4-40 UNC ∇ 0.220;
3 Places

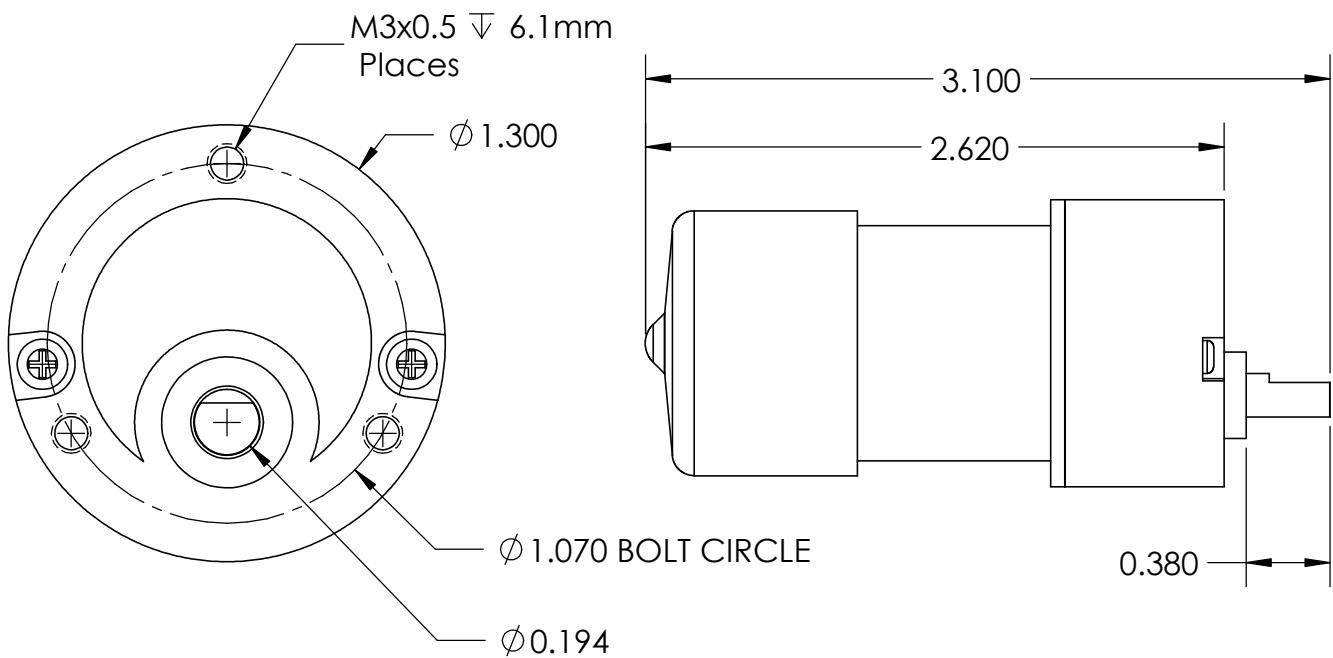
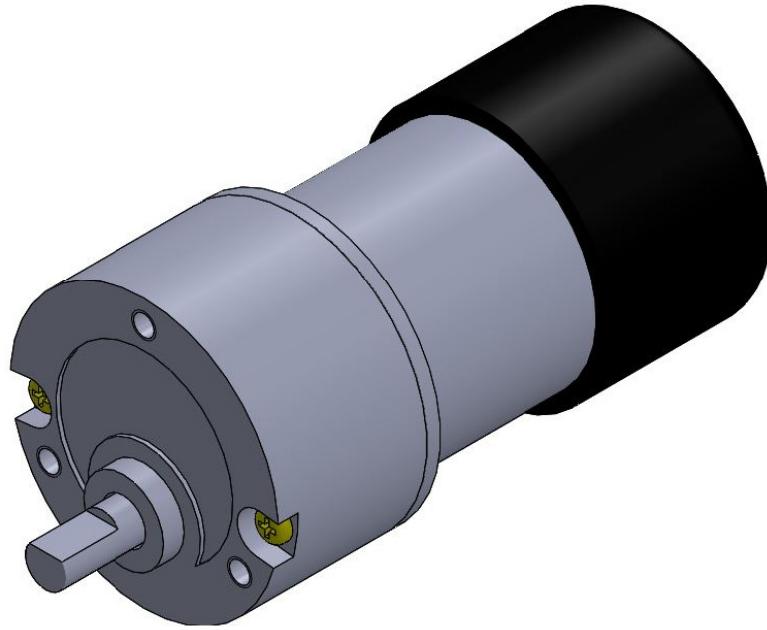


Specifications:

Voltage: 12 VDC
Current: 80mA (no load)
Speed: 51 RPM (no load)
Torque: 16 in-lbs
Back-drive Torque: 30 in-oz (estimated)
Reversible
Weight: 0.4 lb

DIMS IN INCHES

65 RPM Igarashi Gearmotor

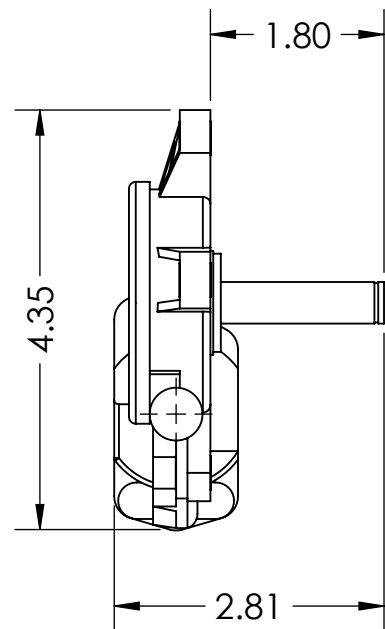
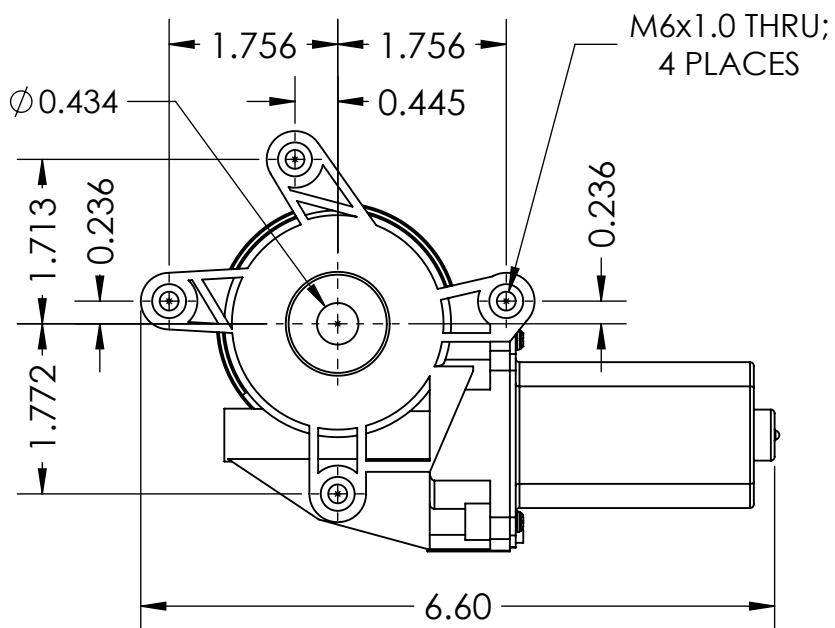
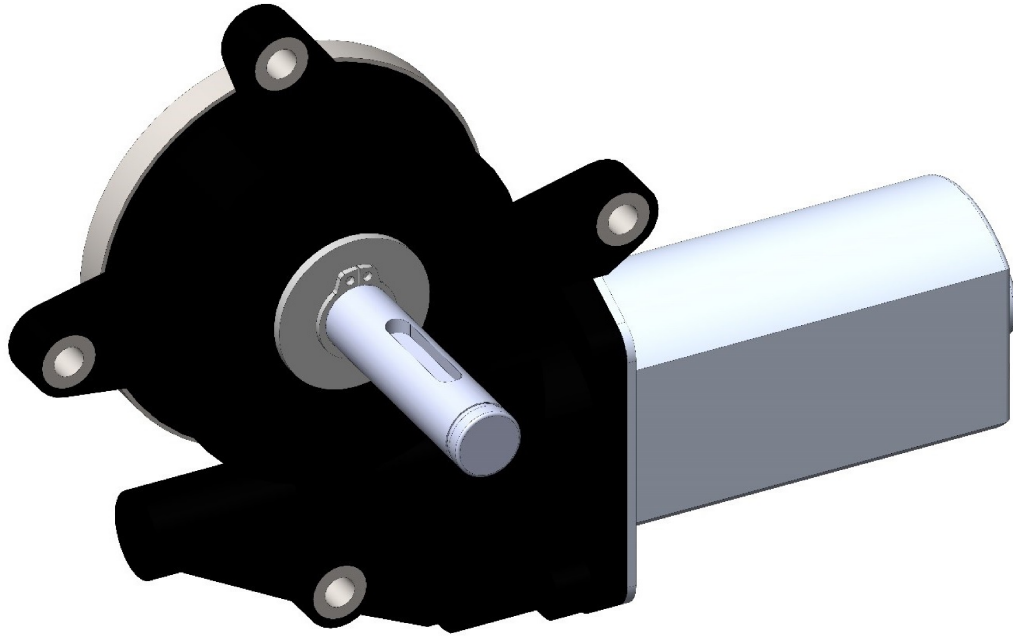


Specifications:

Voltage: 12 VDC
Current: 0.4 A (no load)
Speed: 65 RPM (no load)
Torque: 60 in-oz
Back-drive Torque: 30 in-oz
Reversible
Weight: 0.3 lb

DIMS IN INCHES

85 RPM Cytron Right Angle Gear Motor (Right)

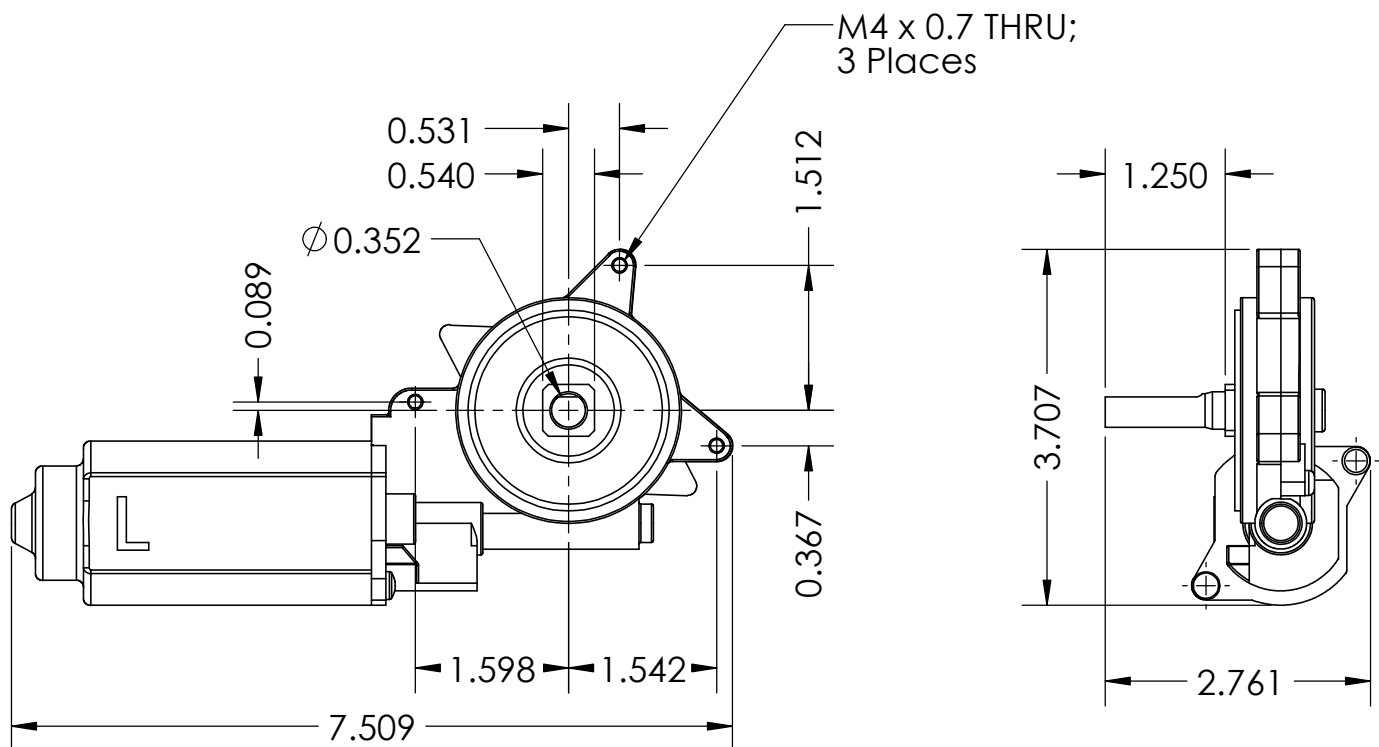
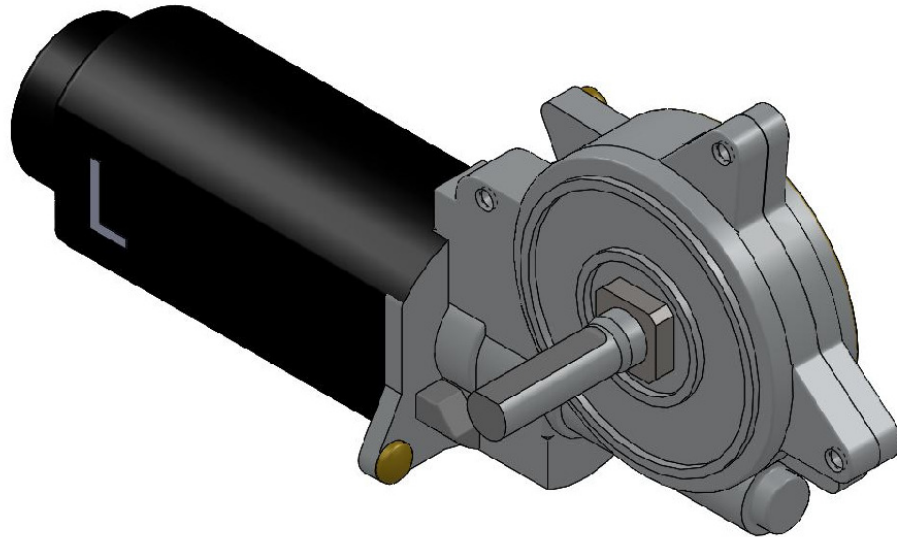


Specifications:

Voltage: 12 VDC
Current: <5A (no load) / 19.3A (full load, i.e. stall)
Speed: 85 RPM (no load)
Torque: 26 in-lb
Back-drive Torque: 87 in-lb
Reversible
Weight: 1.2 lb

DIMS IN INCHES

150 RPM Denso Right Angle Gearmotor (Left)

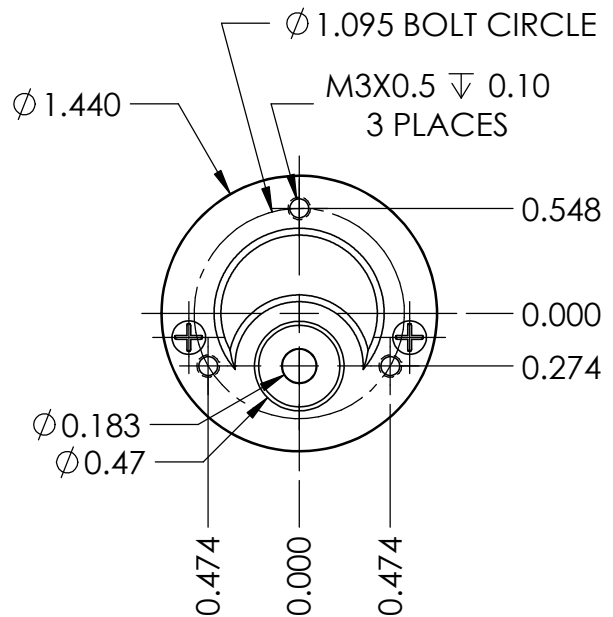
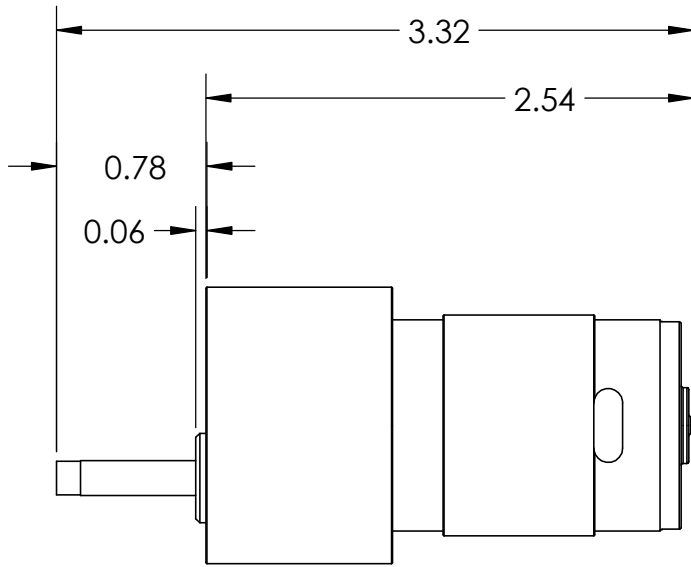
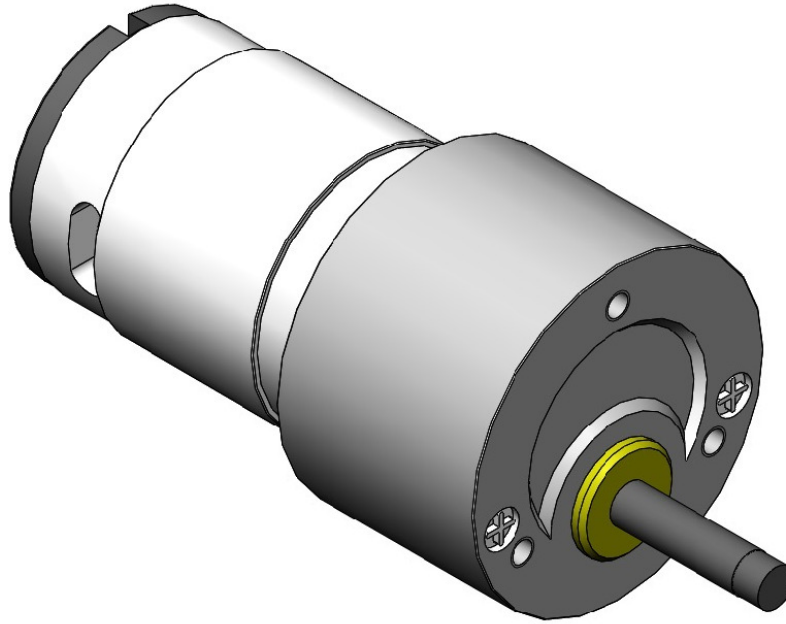


Specifications:

Voltage: 12 VDC
Current: 3.5A (no load)
Speed: 150 RPM (no load)
Torque: 30 in-lb
Back-drive Torque: 11.4 in-lb
Reversible
Weight : 1.6 lb

DIMS IN INCHES

200 RPM SYL Gearmotor



Specifications:

Voltage: 12 VDC

Current: 60mA (no load)

Speed: 200 RPM (no load)

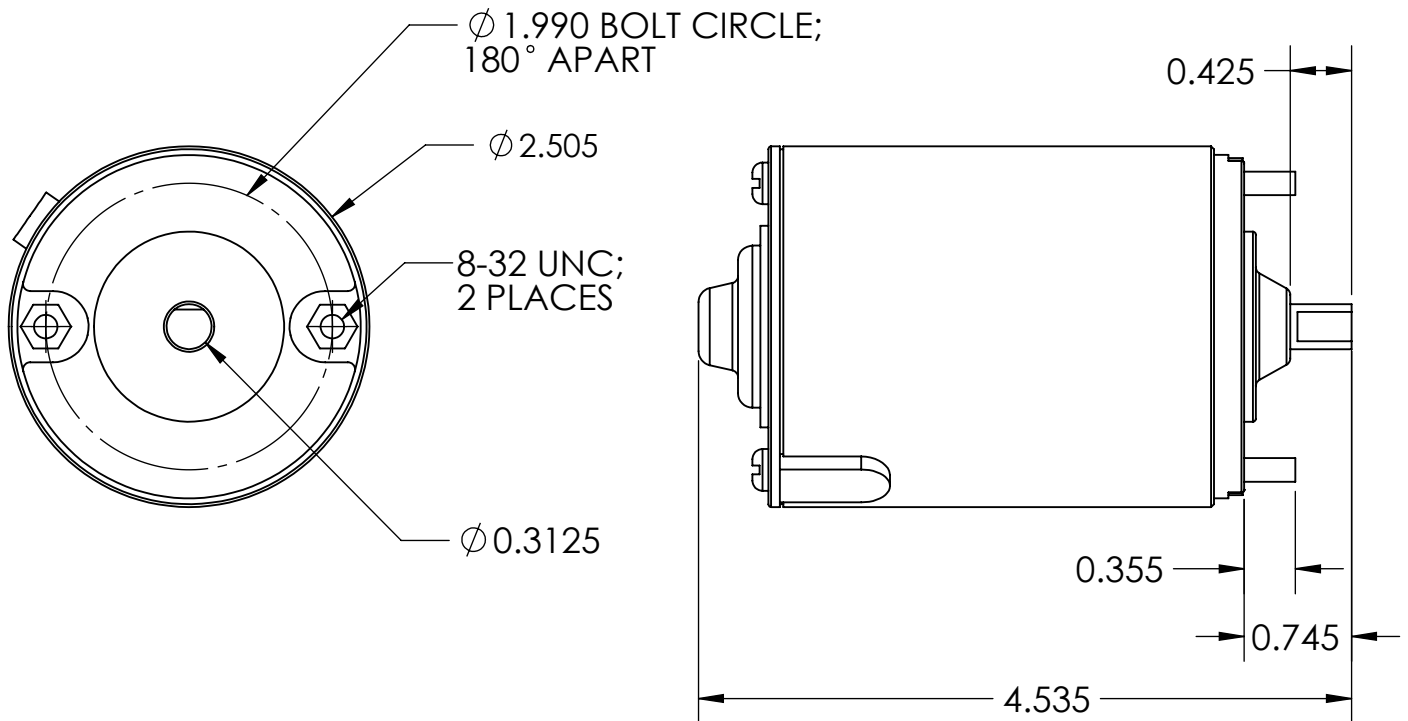
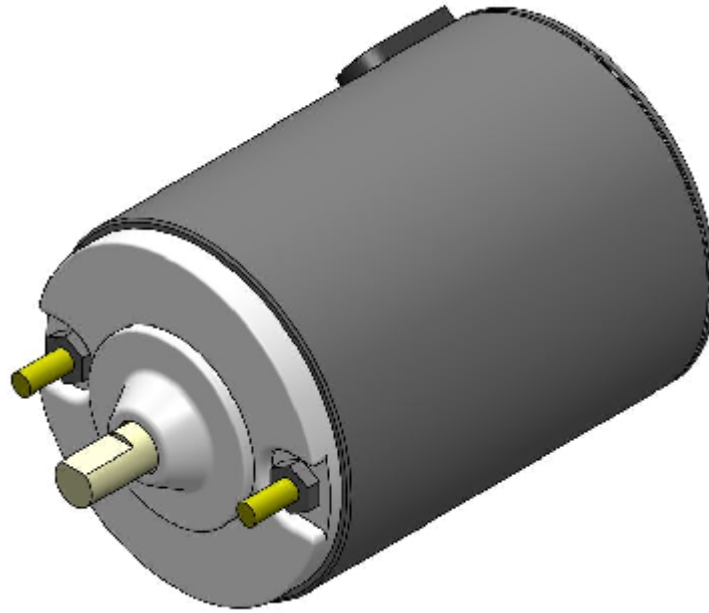
Torque: 25 in-oz

Back-drive Torque: 20 in-oz (estimated)

Reversible

Weight: 0.4 lb

1500 RPM Fan Motor

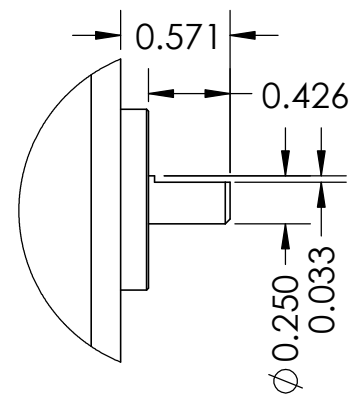
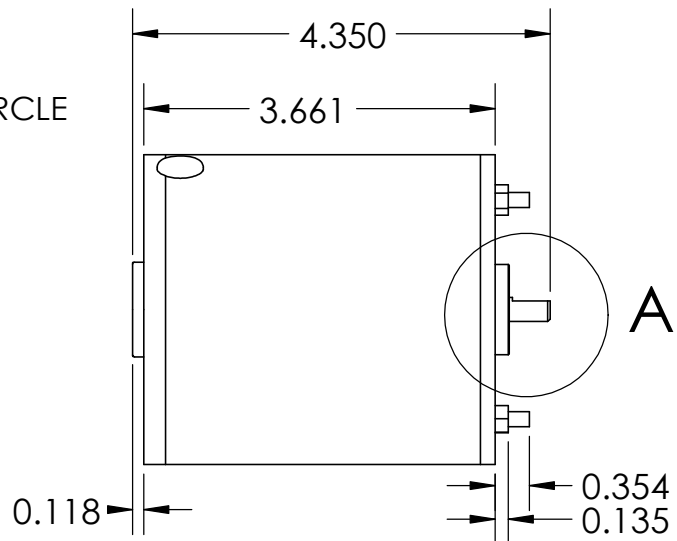
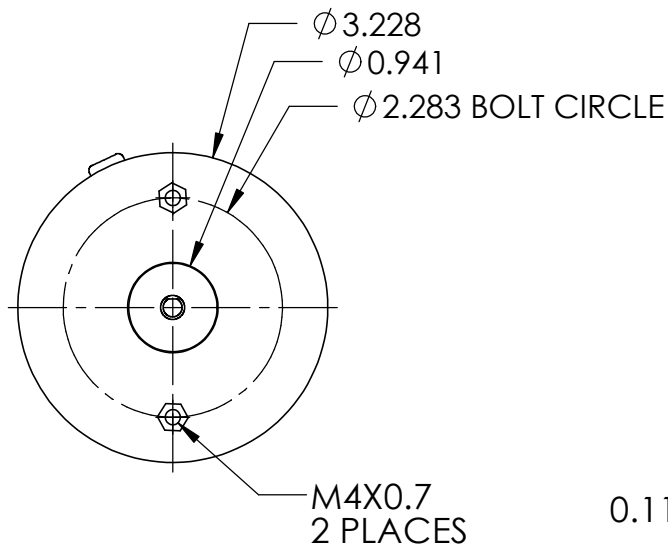
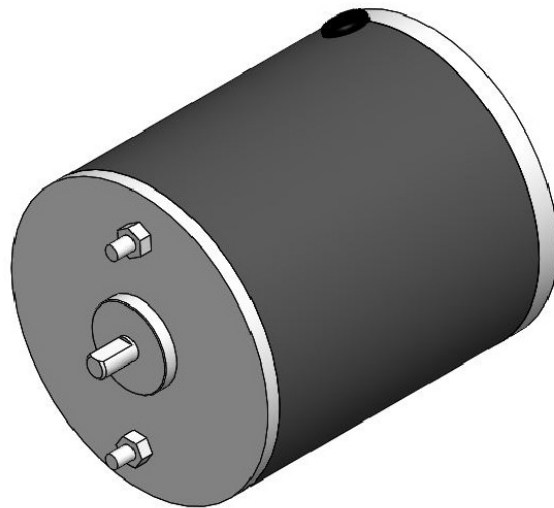


Specifications:

Voltage: 12 VDC
Current: 0.4A (no load)
Speed: 1500 RPM (no load)
Torque: 2.5 in-oz
Back-drive Torque: N/A (no gearing)
Reversible
Weight: 2.0 lb
Torque on Bolts: 20 in-lb

DIMS IN INCHES

1800 RPM RETEK Motor



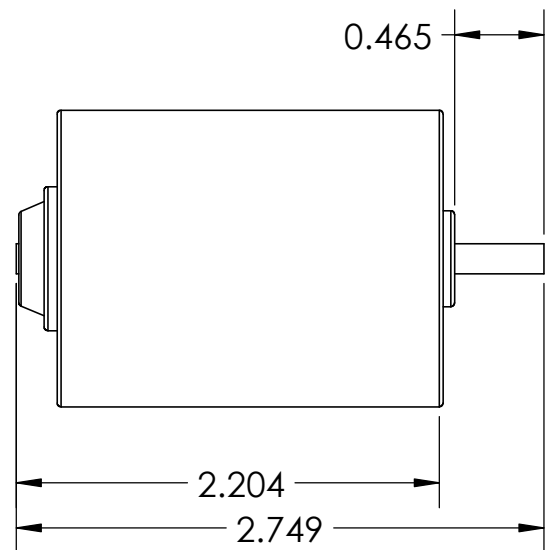
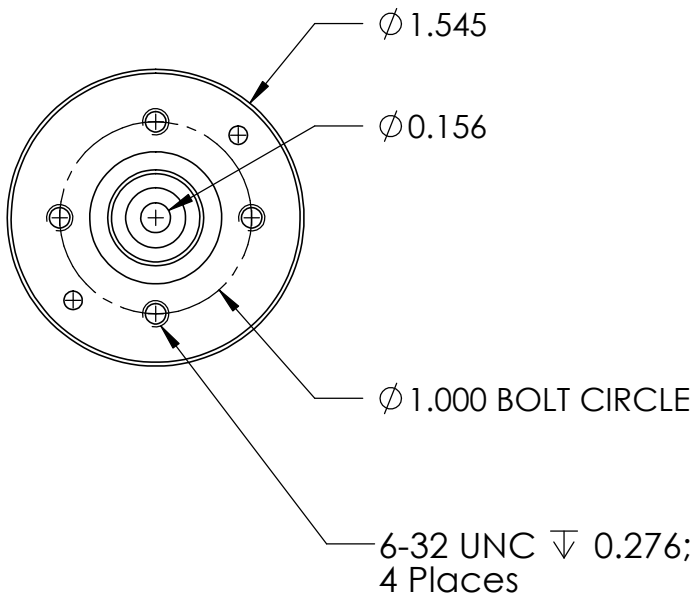
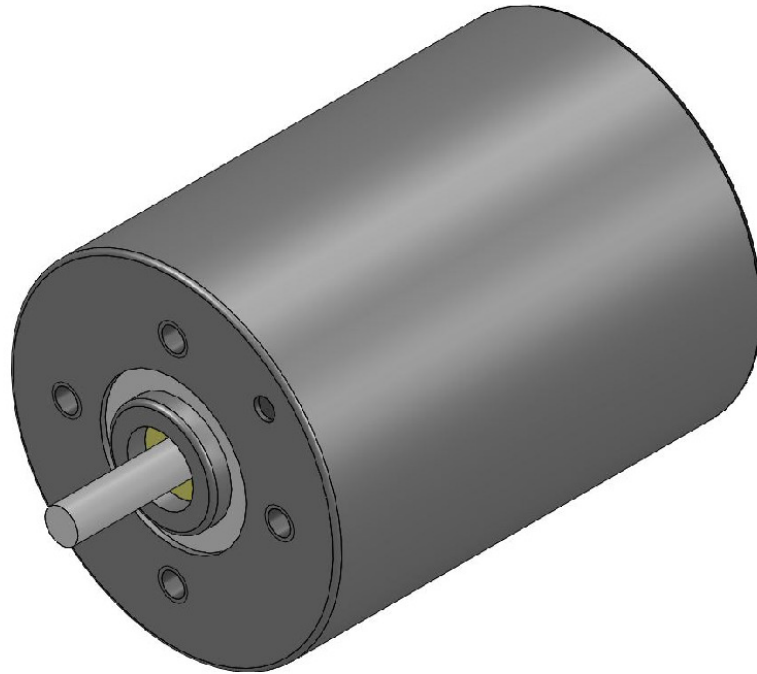
Specifications:

Voltage: 12 VDC
Current: 1.5A (no load) / 5.5A (full load, i.e. stall)
Speed: 1800 RPM (no load)
Torque: 30 in-lb
Reversible
Weight: 2.6 lb

DETAIL A
SCALE 1 : 1

DIMS IN INCHES

3500 RPM Globe Motor

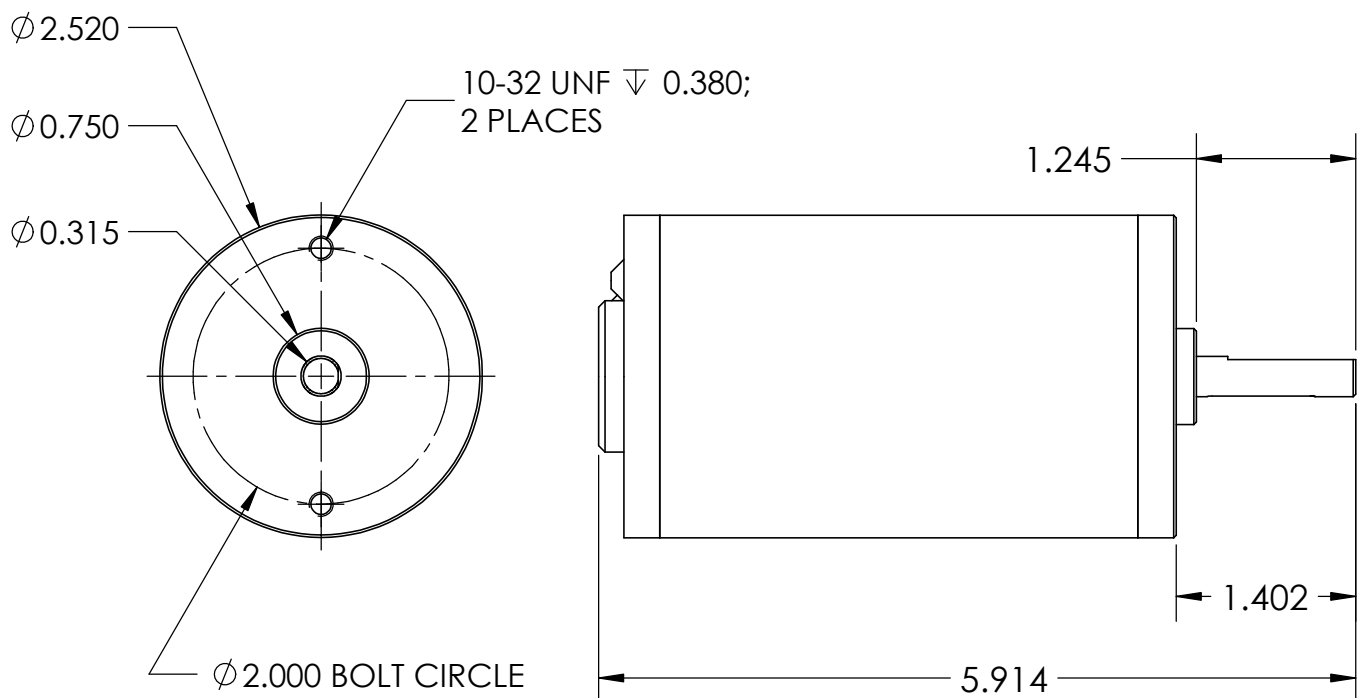
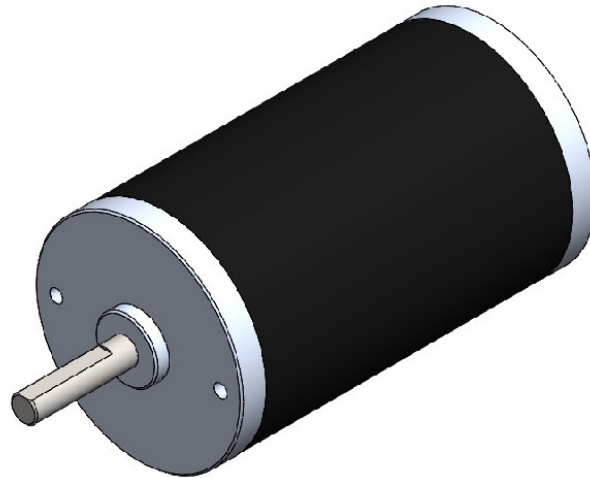


Specifications:

Voltage: 12 VDC
Current: 0.10A (no load)
Speed: 3500 RPM (no load)
Reversible
Weight: 1.0 lb

DIMS IN INCHES

5330 RPM CIM Motor

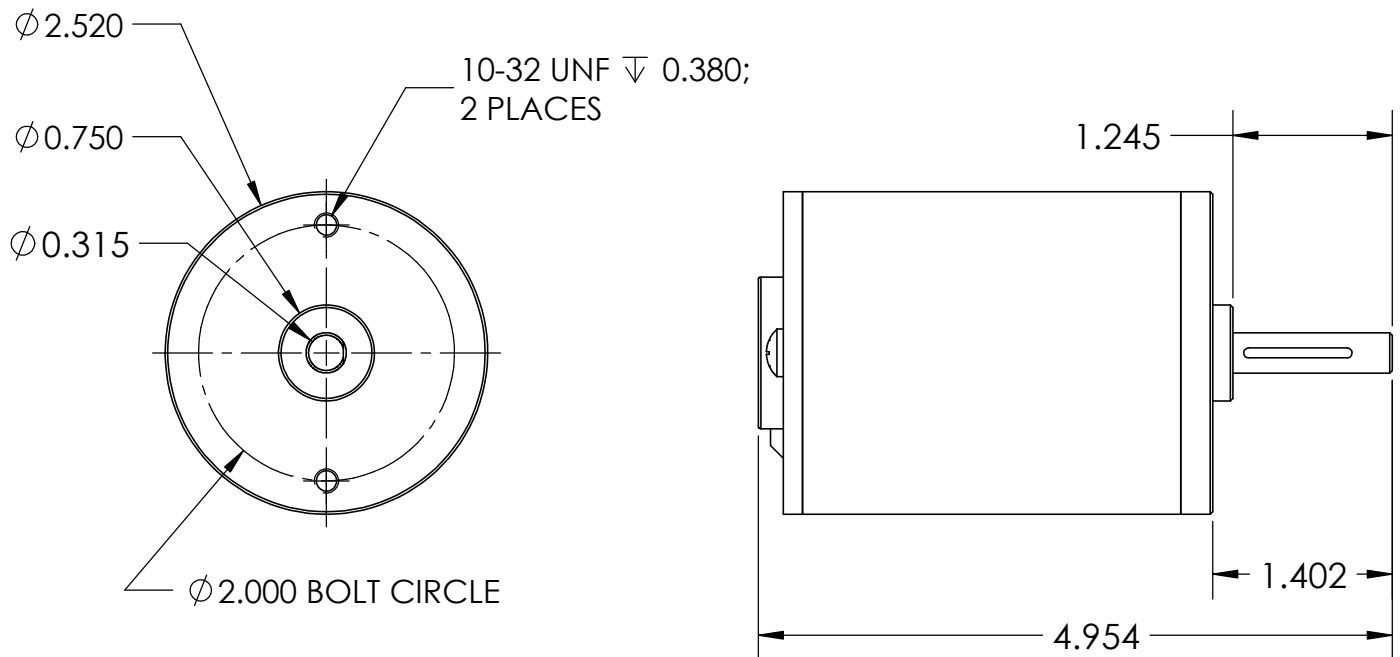
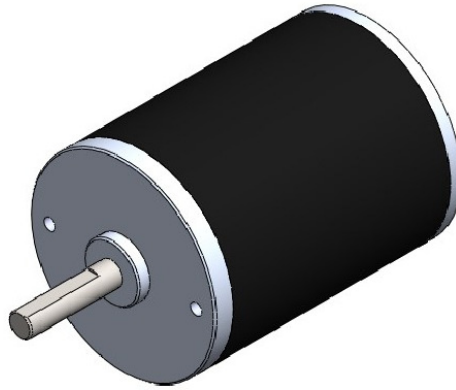


Specifications:

Voltage: 12 VDC
Current: 0.4 / 131A (no load / peak)
Speed: 5330 RPM (no load)
Torque: 21.33 in-lb
Back-drive Torque: N/A (no gearing)
Reversible
Weight: 2.8 lb

DIMS IN INCHES

5840 RPM Mini CIM Motor



Specifications:

Voltage: 12 VDC
Current: 0.4 / 89A (no load / peak) 3.0A (no load)
Speed: 5840 RPM (no load)
Torque: 12.4 in-lb
Back-drive Torque: N/A (no gearing)
Reversible
Weight: 2.16 lb

DIMS IN INCHES