

LATEST WORLD-WIDE FATALITY RATES FOR THE CORONAVIRUS PANDEMIC

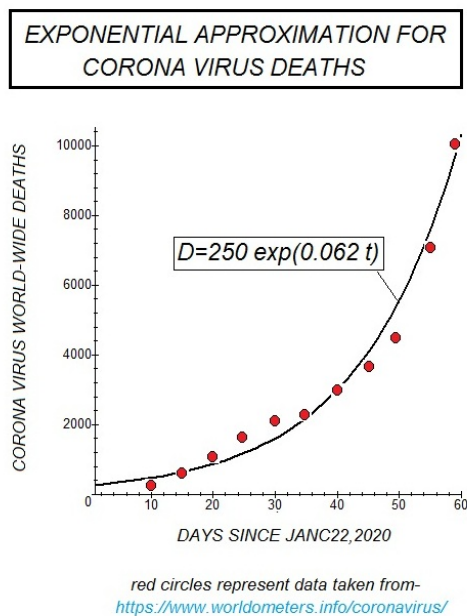
Over the last month I have published three articles on this web page concerning the estimated cumulative fatalities due to the Corona Virus Pandemic . Using data published daily at-

<https://www.worldometers.info/coronavirus/>

and realizing that the early stages of fatality numbers should follow an exponential trend, I came up with the fact that the cumulative number of world-wide deaths should follow the exponential law-

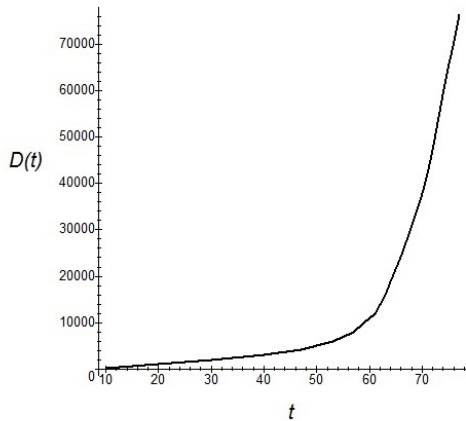
$$D(t)=250\exp(0.062t)$$

Here $D(t)$ represents the cumulative world deaths and t the number of days from January 22, 2020. The starting value of $t=1$ was chosen as the point where the first significant rise in the death toll was indicated by the data. Using the data up through $t=60$, one arrives at the following graph-



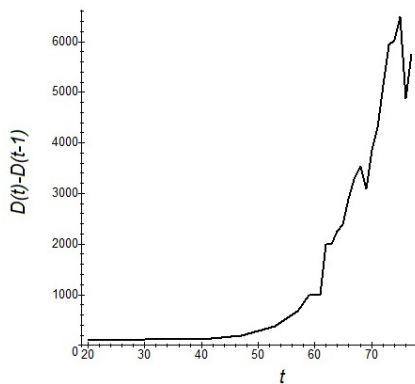
The agreement of the exponential curve shown and the data over the range $1 < t < 60$ is not bad. We noticed, however, that the exponential curve begins to progressively lag the data as one goes above $t=60$. For example, at $t=70$ the data says $D(70)=37815$ while the exponential curve predicts 19176. This discrepancy implies that above $t=60$ the model changes to a super-exponential form requiring changes in the constants in the above formula. It suggests that one now work only directly with the daily data $D=D(t)$ and the daily difference $D(t)-D(t-1)$ and dispense with any formula . We have done this using the latest data at $t=77$ (April 7). Here is the plotted data-

CUMMULATIVE WORLD-WIDE DEATHS FROM THE CORONA VIRUS(10<t<77)



and-

DAILY CHANGE IN MORTALITY DUE TO THE CORONA VIRUS



The latest numbers are seen to be $D(77)=76343$ with $D(77)-D(76)=5748$. These numbers have been rising each week with the exception of the last two days. This may indicate we have reached the expected peak in the daily change of $D(t)$. Yesterday's 16 hundred point rise in the DJI suggests this peak may be real. We will need to wait a few more days to confirm things.

The federal response and the daily presidential press conference concerning the Corona Virus has been highly disorganized and contradictory leaving the public in a quandary. In my opinion, there seems to be too much attention being placed on facemasks and ventilators and insufficient attention paid to quarantine enforcement. Even after the $D(t)-D(t-1)$ peak is reached, the number of cumulative world-wide deaths will have to double again before the final plateau in $D(t)$ is reached sometime in the summer. My earlier estimate for corona fatalities was probably too high.

U.H.Kurzweg
April 7, 2020
Gainesville, Florida